

EVOLUTION^{TM/MC}

COLLECTION

Evolution guarantees the conformity of its products when they are installed according to the installation instructions and are maintained in an environment where ambient humidity ranges between 35% and 55%. Failure to comply with installation instructions shall void the application of the Warranty.

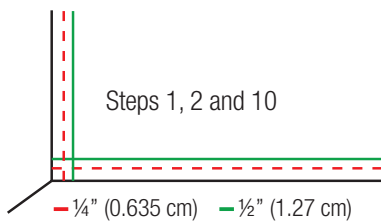
Leave flat on the floor in the original box until installation.

Evolution Installation Instructions

Tools:

- 100% polyurethane construction glue (3 tubes per 100 ft² or 9.5 m²)
- Construction glue applicator
- Electric mitre saw
- Sawbench
- Level
- Measuring tape
- X-Acto type knife
- Pneumatic hammer (# 23 nails)
- Stepladder

Make sure your knives and sawblades are in prime condition.

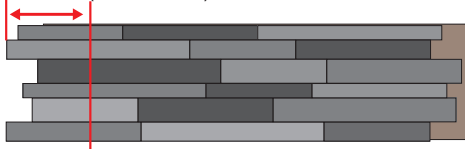


Step 1: Draw an horizontal line at $\frac{1}{4}$ " (0.635 cm) and another at $\frac{1}{2}$ " (1.27 cm) from the floor, this line will become the horizontal level line to install your panel.

Step 2: Trace a level line vertically at $\frac{1}{4}$ " (0.635 cm) and $\frac{1}{2}$ " (1.27 cm), from the left and right side of your wall, the area between these two corresponds to the vertical adjustment area.

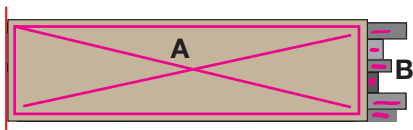
Step 3

min 6" (15.24 cm)



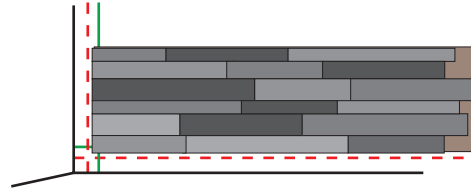
Step 3: Cut a minimum of 6" (15.24 cm) from the male side of your first panel, save the female cut section of the panel to start the wall.

Step 4



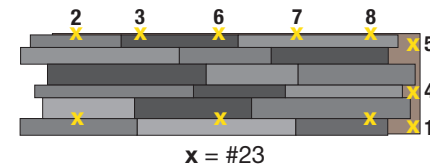
Step 4: A: Apply a line of 100% polyurethane glue in the form of a rectangle $\frac{1}{2}$ " (1.27 cm) from edges and an X inside the rectangle. **B:** Apply glue at the edges of each piece.

Step 5



Step 5: Position the first panel at the lower left section of the wall. Align the first panel vertically in the adjustment area and the top section of the panel on the horizontal and vertical lines calculated earlier by using the level.

Step 6



Step 6: Nail the panel in place with #23 nails on the contour lips and on the two bottom rows in angles between wood pieces. NEVER NAIL DIRECTLY ON THE FACE OF THE NARROW WOOD PIECES.

Step 7: Repeat the gluing procedure (step # 4) Insert the second panel in the previous one using the horizontal adjustment section. Repeat step #6.

Step 8: Measure the last panel from the top row of the panel already installed to the adjustment area where installation is to be completed. The female part that you will cut will become the first element of the next row.

Step 9: For the last panel to be installed in a row, draw an horizontal line at $\frac{1}{4}$ " (0.635 cm) and one vertical line at $\frac{1}{2}$ " (1.27 cm) from the ceiling.

Step 10: Cut the panels of the last row to fit within the horizontal adjustment section.

Step 11: Insert the molding in the reserved space set at the beginning of the installation of the panels, $\frac{3}{4}$ " (1.905 cm) width on top and $\frac{9}{16}$ " (1.428 cm) width on the side.

NOTE : if wood pieces detaches from a wall panel, reposition using 100% polyurethane glue.

Finium recommends that you view our installation video before getting started:

<http://www.finium.ca/documentation/>